

PRICE - CATALOG 2023

Derma
Series

reNeo
cosmetics

RENEO COSMETICS COMBINES

RENEO COSMETICS products are created with combined potential of scientific and production centers located in Germany, France, Switzerland, Italy, Spain and Israel. Due to this cooperation, formulas include a wide range of raw materials, technologies, and the newest components.



Innovations and trends for a beneficial price



Variety of procedures (mandatory and individual steps) based on indications, cost and duration



Online store with professional products and beneficial prices specifically for beauty specialists



Free training 24/7



Cashback 10% for every online purchase



Home care products

CHEMICAL PEELS

3

CONDUCTIVE SERUMS

6

BIOMIMETIC SERUMS

8

MASKS

13

CREAMS / MOISTURISERS

16

SUNSCREENS

18

FACE MASSAGE. EYE CARE

19

CLEANSING

20

SCALP AND HAIR CARE

24

BODY CARE

28

HOME CARE

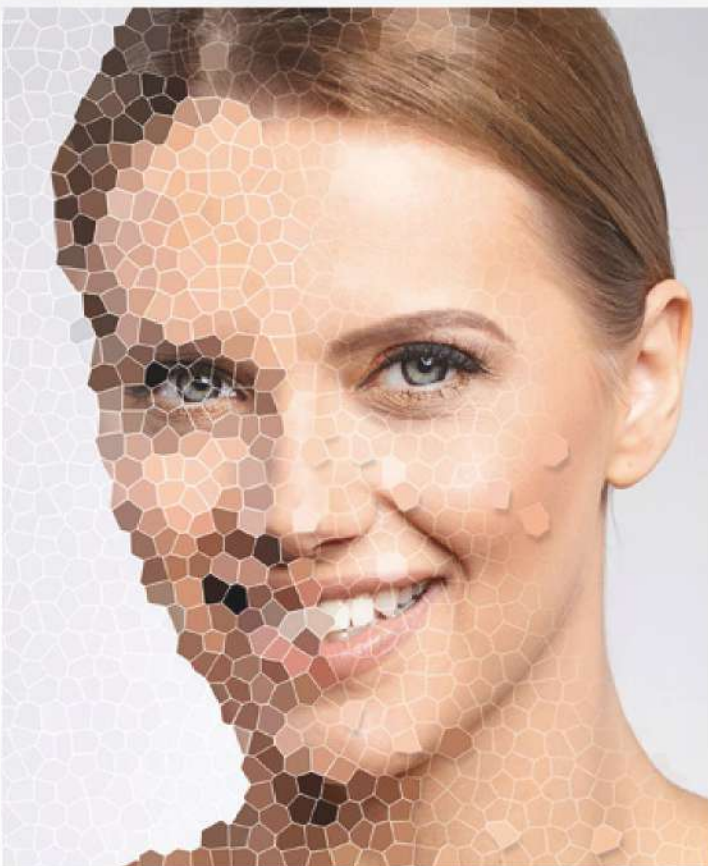
31

MAKE UP

37

CHEMICAL PEELS PEEL-EXPERT

UNIVERSAL PEELING PROTOCOL



The most effective combination of concentrated acids and pH



Safe and controlled action



Leading developments of Spain, Italy and Israel



Possibility of combined, individualized peel programs



Universal 4-step protocol for all peel procedures



Beneficial cost of procedure

1	<p>CLEANSING</p> <p>Clean the skin with P171 Ultra-Norm Cleansing Gel or P172 Comfort Cleansing Mousse. Then decrease the skin and lower the pH with M303 Pre-Peel Lotion AHA&BHA for deeper and more even acid penetration. For reactive and sensitive skin, we recommend just toning the skin with P174 Calming Tonic.</p>
2	<p>PEEL APPLICATION (AS PRESCRIBED)</p> <p>Prepare 1.5 ml of peeling from PEEL-EXPERT line – as indicated to the patient. Use a brush to apply the product evenly over the face. The intensity of the effect is controlled by the exposure time or the number of layers, depending on the skin preparation and the number of treatments in the course. Exposure time for the first use is 3 minutes. In following treatments, you can increase the exposure time up to 10 minutes depending on the condition of the patient's skin.</p> <p>Remove excess acids with wet sponges, then neutralize the acid remains using a cotton pad with M311 Neutralizer. The neutralizer's remains should also be removed from the skin surface with wet sponges.</p>
3	<p>REVITALIZING MASK</p> <p>Apply P135 Hydra-Help Mask with gentle massage movements. It will instantly eliminate irritation, restore skin pH and create optimal conditions for cell regeneration. Exposure time is 10-15 min. Do not wash off the remains of the mask, just soak it with a dry napkin.</p>
4	<p>SPF-PROTECTION</p> <p>At the end of the peel procedure, be sure to use H218 Sun-Block Emulsion SPF50 or H210 Cream-Protector SPF30</p>



PEEL-EXPERT SHINE

M312 pH 3,0
50 ml

- Peeling without rehabilitation period
- Complex anti-age effect: intensive lightening, revitalization and lifting
- Antioxidant cell protection
- Produced in Spain

Combined peeling with a balanced complex of acids. Retinol and resorcinol provide multifunctional anti-age treatment: lightening of age spots of any genesis, aligning skin microrelief, smoothing wrinkles and increasing tissue tension. Additional extracts of plants and fermented oils restore the skin protective function, soften it, provide anti-inflammatory effect and enhance the skin natural radiance.

Due to its balanced composition and comfortable pH (3.0) the peeling does not require rehabilitation period. When applied it causes only a slight tingling sensation, it is well tolerated even by patients with sensitive skin.

It is recommended to use as the second step in PEEL-EXPERT procedure – after the treatment with peeling PEEL-EXPERT LIGHT.



The first exposure time is 5 minutes. With each subsequent session you can increase the exposure time up to 15 minutes. Wash off with water or NEUTRALIZER. Consumption for the procedure is 1,5 ml.

For professional use only.



ACTIVE INGREDIENTS

- Lactic acid 9%
- Kojic acid 2%
- Glutathione
- Retinol
- 4-BUTYLRESORCINOL
- Complex of fermented oils
- Licorice root extract



INDICATIONS

- Hyperpigmentation
- Photoaging
- Age-related changes and fine lines
- Dry and dehydrated skin



CONTRAINDICATIONS

- Acute infectious diseases
- Pregnancy, lactation



PEEL-EXPERT LIGHT

M304 pH 3,3
50 ml Gel

- All-season peel with instant result
- Revitalisation and regeneration of skin
- Peel with no rehabilitation period
- For all skin types even for sensitive skin
- Express care, immediate appearance improvement

Universal combination all-season peel with instant complex result: skin relief is improved, fine lines are smoothed, skin firmness and moisture are increased, skin complexion and appearance are significantly improved.

Due to unique formula and comfortable pH (3.3) this peel is absolutely safe and delicate as well as effective. It can be used even for most sensitive skin with couperosis signs. Revitalizing peel ("bridal peel") does not require preparation. Unique acid combination with regenerative components makes post-peel period free of flaking.

This peel is recommended as a start for a course of peels. Peel can be used for sensitive skin. It has gel texture and is comfortable in application as it does not run.



Use 1.5 ml in one procedure. First exposition is 3 minutes. Time of application may be extended with every next procedure up to 10 minutes.

For professional use only.



ACTIVE INGREDIENTS

- Mandelic acid 15%
- Glycolic acid 6%
- Lactic acid 5%
- Salicylic acid 1,5%
- Arginine
- Allantoin



INDICATIONS

- to prepare skin before more aggressive peels
- to improve microrelief
- to care for dry and sensitive skin
- to care for skin with first signs of ageing
- as an express care with WOW-effect



CONTRAINDICATIONS

- Acute infectious diseases
- Pregnancy, lactation

**PEEL-EXPERT M**

Mandelic acid peel 40%

M310 pH 1,9
50 ml Gel

- All-season acid peel
- Elimination of hyperkeratosis of any kind
- First peel at the beginning of the course (no preparation needed)
- Ideal peel even for sensitive skin

All-season acid peel (pH 1.9) with 40% almond acid provides powerful keratolytic action. It improves skin relief and complexion, makes the skin lighter, performs sebo-regulating and anti-inflammatory actions. Almond acid has a macromolecular structure and performs greatly on a skin surface. It mildly peels dead skin cells and does not penetrate deep epidermis layers. Almond peel is ideal to be used even for reactive sensitive skin with signs of rosacea. It perfectly prepares skin for more aggressive procedures.

Rehabilitation period takes from 3 to 5 days and depends on pre-peel preparation, skin condition and its resources. During this period it is important to use sunscreen and to avoid active insolation. The client will feel a significant improvement in skin condition and will see the aesthetic effect.

This peel with a gel texture does not run and is comfortable in use.



Use 1.5 ml in one procedure. Time of application may be extended with every next procedure from 3 up to 7 minutes. This peel needs to be neutralized! In the course of peels it can be used even in the first procedure for dense skin with vivid pores and couperosis. If the skin has a low regeneration potential, it is recommended to start with [M304 Peel-Expert Light](#), then proceed to [M310 Peel-Expert M](#).

**ACTIVE INGREDIENTS**

- Mandelic acid 40%

**INDICATIONS**

- Microrelief improvement is needed
- Photo damage
- First ageing signs
- Propensity for rashes
- As a part of complex programs for problem skin correction
- Preparation before more aggressive peels

**CONTRAINDICATIONS**

- Acute infectious diseases
- Pregnancy, lactation

**NEUTRALIZER**M311
200 ml

- Quick neutralization of AHA and BHA
- Additional soothing action for irritated skin
- Produced in Israel

This lotion neutralizes activity of AHA and BHA. It restores normal skin pH after aggressive influence of chemical peel. Allantoin provides quick skin restoration and regeneration after damaging action of acids.

In Derma Series procedure protocol after the exposure of the peeling it is necessary to remove excess acid with a wet sponge, and then use a neutralizer to completely stop the acid action on the skin surface. For sensitive skin the neutralization should be done without contact with water.



After the exposure of the peel, remove the excess acid with a wet sponge, and then use a neutralizer to completely stop the acid action on the skin surface. Tonify the skin.

**ACTIVE INGREDIENTS**

- Allantoin
- Sodium Carbonate

**INDICATIONS**

- To neutralize acids during chemical peel procedure.

CONDUCTIVE BOOSTERS



1. Conductive boosters are active concentrates specially designed to work with the latest treatment room technology: ultrasound, iontophoresis, electroporation, microcurrents.
2. Aqueous base with a gel texture provides a long-lasting manipula slide and is used without any additional conductive gels.
3. Apart from being used in device-based procedures, reNeo cosmetics conductive serums show good results as regular serums: in combination with alginate masks and in home skincare.



CONDUCTIVE LIFT-BOOSTER

M126
30 ml

- Instant lifting WOW-effect
- Skin's own collagen and elastin synthesis stimulation
- Improvement of skin turgor and elasticity
- Produced in Germany



Highly active bipolar concentrate is specially designed to be used in a device-based cosmetology by professionals. The product can be used as a gel for iontophoresis, ultrasound, microcurrent and electroporation. This rich complex restores major structural elements of extracellular skin matrix that is responsible for skin elasticity and resilience. It produces a vivid WOW-effect already after the first procedure, that is why it can be used as self-sufficient express care.

Action of a unique TRIACTIGEN complex focus on collagen and elastin synthesis and improvement of tissue turgor. Hydrolyzed Collagen and Elastin work as a substrate for production of skin's own collagen and elastin; provide skin hydration.



ACTIVE INGREDIENTS

- Triactigen
- Hydroviton24
- Hydrolyzed elastin and collagen



INDICATIONS

- As express care for instant results
- For ageing skin correction as a part of other reNeo cosmetics procedures
- To increase tissue turgor
- For sagging, atonic and dehydrated skin



**CONDUCTIVE
AQUA-BOOSTER**

M127
30 ml

- 3 powerful hydrating agents
- Moisture depositing principle
- Instant and prolonged skin hydration
- Produced in Germany

Highly active bipolar concentrate is specially designed to be used in a device-based cosmetology by professionals. The product can be used as a gel for iontophoresis, ultrasound, microcurrent and electroporation. This moisturizing serum for electrical modalities provides intense skin hydration and smoothes small wrinkles that appear due to skin dryness. The product is in an ionised form with a high bioavailability. It significantly improves the effect of physiotherapy.

Aquapront and Hydroviton 24 complexes as well as a hyaluronic acid guarantee quick and long-lasting skin moisturization. It instantly removes dryness, makes skin hydration last for a long time and improves microrelief. The most vivid effect is on skin with a fine wrinkled type of aging.



**CONDUCTIVE
CALM-BOOSTER**

M128
30 ml

- For hypersensitive skin with couperose and rosacea
- Firmness improvement of vascular walls of capillaries
- Decrease of skin inflammatory reaction
- Produced in Germany

Highly active negatively charged concentrate is specially designed to be used in device-based cosmetology by professionals. It is perfect for iontophoresis, ultrasound, microcurrent and electroporation. It is ideal for sensitive skin prone to reactivity and skin with couperose and rosacea signs.

This serum for sensitive skin for professional skincare modalities contains liquorice root and horse chestnut extracts – active ingredients that make capillary walls firmer and stimulate injury recovery. Panthenol and bisabolol produce calming, hydrating effects and decrease inflammation manifestations.

 ACTIVE INGREDIENTS

- Aquapront
- Hydroviton24
- Hyaluronic acid

 INDICATIONS

- After first signs of skin dehydration
- In anti-age protocols, especially in care for ageing skin with fine wrinkles
- After aggressive cosmetological treatments
- For tissue rehydration

 ACTIVE INGREDIENTS

- Licorice root extract
- Horse chestnut extract
- Vitamin B5 (Panthenol)
- Alpha bisabolol

 INDICATIONS

- For sensitive skin prone to couperose
- To decrease manifestations of irritation of hypersensitive skin
- In case of allergic and vivid inflammatory reactions on skin

BIOMIMETIC SERUMS



The formula of each reNeo cosmetics serum is uniquely developed by leading European laboratories:

- balancing the composition of innovative components in a different concentration
- patented biotechnological complexes
- targeted influence to solve the aesthetic problems of the skin

Each serum can have targeted action, perfectly combined with creams and masks in complex treatments.

VITA-ACTIVE PEPTIDE SERUM

P219
50 ml



- 11 active ingredients
- Restoration of a skin lipid barrier
- Complex anti-age effect
- Produced in Spain

Multifunctional serum with a fluid texture and light fragrance is easily and quickly absorbed by skin leaving no stickiness. It is suitable for all skin types, especially for skin prone to dryness and lack of tone. This nutrition vitamin serum prevents dehydration, makes complexion more even and lighter, removes fine lines.

The fluid has rich and complex composition. Vitamins A, B, C and E promote ceramides and oily acids synthesis for a restoration of skin barrier functions; perform antioxidant protection, tighten blood vessels walls and take part in synthesis of multiple structure skin components. Five growth factors in its composition regulate proliferation and differentiation of skin cells. Acetyl hexapeptide 8 relaxes mimic muscles and prevents appearance of mimic lines.

USAGE

Apply to cleansed face and neck skin under a mask or finishing cream.
The serum is used for a course of up to two months in both salon and home care.



ACTIVE INGREDIENTS

- Vitamins A, B, C, E
- Acetyl Hexapeptide 8
- Growth Factors
- Folic Acid



INDICATIONS

- For skin prone to dryness and moisture loss
- In complex mature skin care
- For combination skin with post-acne
- For atonic skin



HPR SERUM with Granactive retinoid 2%

P223
30 ml

- Powerful skin cell renewal
- Regulation of keratinization on all levels
- Correction of acne-like rashes
- Produced in Switzerland

HPR SERUM with peptides and retinoid of the latest generation specifically affects the nuclear receptors of skin cells, stimulates renewal, regeneration, and synthesis of new structures of the extracellular matrix. Serum helps to even out the microrelief and skin tone, narrows pores, normalizes keratinization processes, and reduce rashes. Als restores skin elasticity and hydration, significantly improves its color, and smoothes fine wrinkles. It contains two unique components. The latest generation HPR retinoid is the most effective for skin renewal among retinol derivatives and at the same time it is absolutely safe, with a very low irritation potential. Renovage peptide complex promotes skin thickening and restoration of its turgor by stabilizing telomeres in the DNA cells. The complex of sweet almond and grape seed oils saturates the skin with antioxidants, preventing inflammatory and oxidative processes in tissues.

The serum has a light oily texture and is perfectly absorbed without creating a film on the skin surface.

USAGE

Apply to cleansed dry skin only at night. After 10-15 minutes apply the cream! It is recommended to gradually increase the dose depending on the sensitivity of the skin and the purpose of using the serum, the course is adjusted individually. During the first 10 days, we recommend using the serum every 3 days. From the 11th to the 20th day, use it every second day, and from the 21st day, we recommend using it every day. The full course of treatment is 60 days.

ACTIVE INGREDIENTS

- Grandactive Retinoid 2%
- Renovage
- Sweet almond oil
- Grape seed oil

INDICATIONS

- For correction and prevention of age-related changes
- In the complex treatment of acne-like rashes
- For lightening of hyperpigmentation of any genesis



3D-LIFT SERUM

P185
50 ml

- Peptide complex for atonic skin
- Lifting and hydration
- Record 15% increase in elastin synthesis
- Produced in Germany

Lifting anti-age serum for effective aging skincare. Highly active ingredients influence all skin levels and stimulate synthesis of vital extracellular matrix components – elastin, collagen, and natural hyaluronic acid. Skin elasticity, firmness, hydration level, and tone get a vivid and long-lasting effect.

This peptide rejuvenation serum includes (the) peptide complex IDEALIFT that activates synthesis of elastin. Biotech polysaccharide complex PENTAVITIN in combination with hyaluronic acid of various molecular weights smooth out wrinkles, provide deep hydration and create an effect of super fullness.

The serum has a light gel texture and is quickly absorbed.

USAGE

Apply to cleansed face and neck skin under a mask or finishing cream.

For maximum effect, it is recommended to apply the course of 2 months.

ACTIVE INGREDIENTS

- Idealift®
- Pentavitin®
- Hyaluronic acid (high molecular & low molecular)

INDICATIONS

- In case of gravitational ptosis
- In case of loss of turgor and tone
- For age-related wrinkles
- For fragile dehydrated mature skin
- To prevent skin aging changes



RENEWING ENZYME AHA SERUM

P107
50 ml

- Epidermis regeneration
- Gentle exfoliation
- Effective pre-and-post peeling care
- Produced in France

Serum for gentle skin renewal. The combination of enzyme and acid peeling effect provides a thorough exfoliation of keratinized cells of the epidermis and helps to restore a balanced process of keratinization and regenerative functions of the skin. Activation of keratinocytes activity increases the synthesis of cytokines which influence the production of the structural elements of the dermis. Active hydration normalizes the level of hydration of the epidermis and prevents the violation of desquamation.

The serum significantly improves skin relief and increases the activity and bioavailability of the other components of care.

USAGE

At the stage of regenerative activation in the procedure the serum can be used as an enhancer (apply for 3-5 minutes in a thin layer without subsequent washing off), or to provide a light peeling effect (apply in a thick layer for 5-7 minutes, then rinse off with water).

Apply to cleansed skin before applying a mask or cream.

Can be used in professional procedures as well as in daily evening home care.

ACTIVE INGREDIENTS

- Glycolic acid (5%)
- Keratoline (biotechnological enzyme)
- Raspberry extract

INDICATIONS

- As a regenerative activation step in any procedure
- As a preparation for a professional peel or mesotherapy treatment
- For a refreshing therapeutic effect on hypersensitive skin
- As a supportive post-peeling care



MELANO-BLOCK SERUM

P181
50 ml

- 4 super-powerful brightening agents
- Interacts with the skin microbiome
- Perfectly even skin toning
- Protection of cellular DNA from UV radiation
- Produced in Switzerland

A revolutionary concentrate for brightening and even toning of the skin with a therapeutic effect. The most powerful brightening agents in one product! Brightenyl® is the first generation of active ingredients that are activated when applied to the skin by microorganisms normally found on human skin. Stratum microbium converts the component into molecules that act on 7 biological chains to reduce age spots and redness of various origins. Along with a fantastic brightening and smoothing effect, the serum provides intensive protection of skin cells from free radical damage, reduces the inflammation reaction of the skin and has a moisturizing effect.

Customers want fast and reliable results in their brightening treatment – this SOS-serum guarantees them to get it!

USAGE

Apply to cleansed face and neck during the day.

After the serum use a finishing cream, preferably with SPF.

ACTIVE INGREDIENTS

- Brightenyl®
- Asyntra®SL
- Niacinamide PC
- Flash white unispheres®
- Unitamuron H-22

INDICATIONS

- In case of any skin imperfections
- To fight existing age spots of various origins
- For recovery after active ultraviolet radiation
- To prevent the appearance of new age spots
- For correction of post-acne



ANTI-RED CALMING SERUM

P178
50 ml

- SOS-serum for redness removal
- Instant calming effect
- Decreasing of skin sensitivity to environmental irritants
- Deep hydration
- Produced in Germany

Serum for sensitive skin with a strong anti-inflammatory complex with instant action. This serum is created for irritated skin prone to all kinds of rashes and allergic reactions. It removes itching and erythema.

Instantly soothes irritated skin and strengthens skin protective barrier. This serum-fluid performs regenerating and moisturising action significantly lowering skin sensitivity. As a result, epidermis is calm and stable even under intensive environmental influence. Silky skin is well hydrated, and its complexion remains healthy and fresh. The calming serum is an irreplaceable product for professionals as it helps to sooth skin in case of any unpredictable reactions. It can also be used in aggressive procedures.

Patented biotech complexes DEFENSIL and PENTAVITIN improve natural skin barrier functions, prevent allergies and irritations, normalize skin hydrobalance. This product is ideal for the most sensitive skin in professional care as well as in home care.

USAGE

As a course of treatment or on a regular basis, twice a day.
Apply to cleansed skin, then use a finishing cream.

ACTIVE INGREDIENTS

- Defensil®
- Pentavitin®
- Alpha-Bisabolol

INDICATIONS

- For instant redness removal
- In a daily care for sensitive skin to lower its reactivity
- In case of allergic reactions
- In an aggressive environment



ANTI-WRINKLE SERUM

P117
50 ml

- Effective relaxation of facial muscles
- Double action: miorelaxation and moisturizing
- Instant and prolonged effect
- Produced in France

An effective and safe cosmeceutical method for getting rid of expression lines. A miorelaxant has both instant and prolonged action. Relaxation of expression line muscles leads to smoothing of wrinkles and preservation of skin smoothness. The "smoothing" effect is enhanced by the moisturizing properties of the serum.

The serum has a light gel texture and is quickly absorbed.

USAGE

The serum is recommended to use both totally (in case of network of expression lines to enhance the smoothing and filling effect) and locally (forehead, brow, crows feet).

ACTIVE INGREDIENTS

- Syn-Ake
- Hyaluronic acid

INDICATIONS

- In the complex care of mature skin
- In case of expression lines
- To correct and fill age-related wrinkles

LOCAL SOS-SOLUTION




P213
100 ml

- Intense drying and bactericidal action
- Resorption effect for infiltrates
- Tissue regeneration
- Produced in Israel

Irreplaceable product in care for problem skin with rashes! It performs a double impact on inflammations: dissolves infiltrates and dries out pimples. This SOS-product improves skin regeneration and skin microcirculation. It guarantees a highly effective action in every stage of the inflammation process!

High concentrated sulfur and zinc act perfectly against subcutaneous tick – demodex. Niacinamide and rosemary extract improve regeneration and microcirculation that prevent the appearance of congestive post-inflammatory spots – post-acne.

 USAGE

Needs to be well shaken before application! It is perfect to be used in professional care after extraction, as well as in home care in the evening, according to professional recommendations.

After performing a mechanical or hardware deep cleansing, apply the product to the entire face, enhance the effect with a darsonvalization procedure. Then it is possible to perform a Jacques massage.

In home care – apply at night dotting inflammatory elements.



ACTIVE INGREDIENTS

- Vitamin B3 (Niacinamide)
- Sulfur
- Zinc oxide
- Camphora
- Rosmarine extract



INDICATIONS

- As a local solution for inflammation areas
- After a mechanical peel
- To dry up excessively oily skin with acne



TOTAL OIL-CONTROL SERUM


P176
50 ml

- Complex action on 4 main problems of sebo-regulation
- Restoration of natural bacterial flora balance
- Additional hydration for extra dry skin
- Produced in Germany

High concentrated serum for oily skin has a complex effect on normalizing sebo-balance. It decreases skin sebum production, eliminates oily shine and reduces hyperkeratosis. The serum is perfect for problem skin. It has antibacterial and anti-inflammatory effects.

The major component of the serum is an active complex AC.NET based on oleanolic and nordihydroguaiaretic acids (NDGA) in their maximum effective concentration (3%) that influence complex restoration of skin sebo-regulation. Salicylic acid also performs keratolytic and bacteriostatic actions. Due to hydrative qualities of sea algae serum protects the skin from dehydration.

This serum has a light gel texture.

 USAGE

Apply to cleansed skin before applying a sebo-regulating mask, or under the finishing cream.

It is recommended for professional care and supportive everyday home care.



ACTIVE INGREDIENTS

- AC.NET™
- Salicylic acid
- Red algae Hondrus Cryspus extract
- Aloe vera



INDICATIONS

- For oily, combination and problem skin
- As a supportive product to care for skin with acne
- For normal skin during summer period
- To prevent rashes and inflammation
- For teen skin care

MASKS



Active mask and targeted serum are the basis of any professional skin care procedure.

In the assortment of reNeo cosmetics, you will find professional cream and alginate masks for the various needs of the skin of your patients: for dry skin, for oily, problematic skin, breakouts, for dull skin, with the first signs of ageing, for complex anti-ageing procedures.



HYDRA-HELP MASK

P135
200 ml

- Skin hydrobalance restoration
- Stimulation of natural moisture retention processes
- Long-lasting effect of deep skin hydration
- Reduces irritation, soothes the skin
- Produced in France

Cream mask has a very light texture and its innovative formula works on the principle of continuous skin hydration and restructuring. It provides total restoration of skin hydro reserves: maintaining osmotic balance in the cells, stimulating hyaluronic acid synthesis, keeping moisture in the epidermis through hygroscopic components, as well as restoring the lipid barrier, creating a protective film to prevent moisture loss.

Plant complex Aquaxyl promotes synthesis of aquaporines (transport proteins) for optimal distribution of moisture in the skin as well as synthesis of ceramides to restore lipidic skin barrier. High molecular hyaluronic acid retains moisture that provides emergency care for dehydrated skin.

This is an ideal mask for sensitive skin that decreases inflammatory reactions and flaking. It is an obligatory element of peel procedure. It instantly soothes the skin, restores its pH, and provides optimal conditions for its regeneration.

USAGE

Moisturizing mask is used 1-2 times a week. Apply the mask in a dense layer on the face and neck area, leave it for 15-20 minutes, then soak the remains with a dry napkin. Do not wash off.

In home care use it as a final night cream 1-2 times a week. For very dry, dehydrated skin use as a course of treatment: daily for 1-4 weeks, then once or twice a week.



ACTIVE INGREDIENTS

- Aquaxyl
- Hydraparine®
- Hyaluronic acid (high molecular)



INDICATIONS

- To care for dry and dehydrated skin
- To care for skin with "fine lines" type of aging
- To protect the skin before use of thermo active plaster mask
- To care for hypersensitive skin
- In chemical peel procedures



SOFT BALANCE CLAY MASK

P189
200 ml

- Restoration of epidermis lipids
- Nutrition for ALL skin types including sensitive and oily skin
- Powerful detox action with a brightening effect
- No parabens, silicones and mineral oils

Nutritive mask with WOW-effect has perfect cleansing and lightening properties. This instant beauty mask is a powerful detoxifier. It evens skin tone and relief, hydrates and nourishes skin restoring its protective barrier, normalises skin sebum production and unclogs pores. The product can be used as a sos-mask for sensitive skin – it soothes skin, decreases inflammation and skin flaking. This mask contains kaolin that absorbs an excessive skin sebum. Ingredients with a high concentration of organic silicon support skin elasticity and its ability to retain moisture. Cocktail of light oils promotes restoration of skin barrier.

This high plasticity mask can be easily applied without any preliminary preparations. It does not dry up skin at all!

USAGE

Apply 6 ml of the mask in an even layer to the face and neck area. Allow the mask to work for 15-20 minutes. Then emulsify with light massaging movements with wet hands. Rinse off the remainder with water and tone it.

It is recommended to use the mask 1-2 times a week in home care.

ACTIVE INGREDIENTS

- Kaolin
- Avocado oil
- Sweet almond oil
- Vitamin E (Tocopherol)
- Natural glycerin
- Beeswax

INDICATIONS

- To detox dull and tired skin
- To improve microrelief and prevent premature ageing
- In a refreshing express course during change of seasons
- For damaged skin restoration – removal of skin peeling and irritation
- As an instant beauty mask for all skin types



SEBO-NORM MASK

P212
200 ml

- Normalizing action on problem skin
- Complex sebo regulation
- Anti-inflammatory and antibacterial effect
- Ideal mask after deep cleansing
- Produced in Israel

Creamy mask for oily skin based on green clay normalizes problem skin with multifunctional actions including: absorption, sebo regulation, anti-inflammation and soothing. This mask perfectly tightens pores, mattifies skin and speeds up healing. When used regularly it dissolves congestions – post-acne. This is an ideal antibacterial mask to complete cleansing!

Contains sulphur, camphor, azelaic acid and plant extracts that perform complex anti-inflammatory, antioxidant, vasoactive action, and provide demodex prevention.

USAGE

Apply 6 ml of the mask in an even layer to the face and neck area. The mask is easily spread on skin, does not dry up, and should be removed with warm water after 15 minutes of application. For a short time might appear prickly feeling during the application.

It is recommended to use the mask 1-2 times a week in home care.

ACTIVE INGREDIENTS

- Green clay (Illite)
- Sulfur
- Zinc oxide
- Camphora
- Azelaic acid
- Green tea extract
- Rosmarine extract
- Camomile extract

INDICATIONS

- For combination, oily skin
- For teen skin to prevent specific complications
- In the course of skin extractions
- In the course of regular care for problem skin with acne
- In home care of problem skin with your beautician recommendations

POLYPEPTIDE ALGAE MASK


P131
400 g

- Warm algae mask
- Powerful lifting and hydration effect
- Ideal consistency and plastification time
- Produced in France



Mineralizing and nourishing plasticizing mask is a perfect stimulator in the active phase of professional face skin care. Due to occlusion main active ingredients penetrate deep into skin and perform effectively. Plastification of the mask guarantees lifting effect and instant result.

Alginate mask with sturgeon roe extract nourishes skin with phospholipids restoring its lipidic barrier and improving skin cellular membrane structure. Mask alginates provide hydration, smoothness and rejuvenation.

 USAGE

Mix 30g of powder and 90g of warm water (45°C). This will ensure comfort and pleasant warmth during the procedure. Stir very quickly, until a homogeneous mass is obtained. Use a trowel to apply the mask to the face, moving along the massage lines. After 15 minutes of exposure remove the mask from the face in one movement, from the bottom of the chin upwards to the forehead. Remove the rest of the mask with a damp sponge, tone it down.

 ACTIVE INGREDIENTS

- Alginate
- Black caviar extract

 INDICATIONS

- For dull complexion
- For atonic, dehydrated skin
- For skin with vivid ageing signs
- After aggressive environmental influence

ANTI-WRINKLE MASK

P208
400 g

- Triple effect on wrinkles: smoothing, filling and lifting
- Moisturizing and mineralizing of the dermis
- Immediate effect after the first treatment
- Botulinum therapy effect prolongation
- Produced in France




Triple effect for the correction of expression lines. Relaxation of mimic muscles leads to smoothing of wrinkles and contributes to preservation of skin smoothness.

Botox relaxing effect is achieved due to a synthetic peptide – argireline, which blocks the transmission of nerve and muscle impulses, imitating the action of botulinum toxin.

Filling effect is achieved by increasing the volume of subcutaneous fat due to the content of Dictyopteris brown algae oil.

Lifting smoothing effect is enhanced by the Homeostatine™ M.S. complex, which restores homeostasis in the extracellular matrix. Suppresses the activity of metalloproteinases and the synthesis of pro-inflammatory cytokines. Reduces the depth and number of wrinkles, makes the skin firm and elastic. Potentiates lifting effect and moisturizing effect of alginate salt.

 USAGE

Mix 90 ml of room temperature water with 30 g of powder. Mix to create a homogeneous mixture. Apply the mask on face using spatula, following the massage lines. After 15 minutes remove the mask from the face as one piece, starting from bottom to top.

 ACTIVE INGREDIENTS

- Alginate
- Argirelin
- Dictyopteris oil
- Homeostatine™ M.S.

 INDICATIONS

- In case of first signs of expression lines and dry skin
- To prolong the effect of botulinum toxin injections
- In case of the fine-wrinkle type of aging, skin atony or subcutaneous fat deficiency
- In the complex care of the eye area, for elimination of edema and filling of small radial wrinkles. Use with caution in the case of ruptures of the lower eyelid
- In combination with Polypeptide alginate

CALMING LIGHT CREAM

P190
200 ml *light gel texture*

- Quickly soothes skin irritation of any type
- Invigorates blood vessels net
- Ultra light gel texture
- Teen skin care



This light cream for sensitive skin relieves irritations, restores skin barrier functions, decreasing its reactivity. The cream is effective in taking care of problem skin prone to inflammation.

Palmitoyl tripeptide 8 in its composition supports optimal skin sensitivity, instantly soothes skin and promotes its regeneration. Bio-active extracts of red and brown algae hydrate the skin. White ivy bark extract performs anti-inflammatory and anti-stress action. Unispheres of Vitamin E improve tissue immunity and anti-oxidant skin protection.

It is an ideal cream for oily skin due to its light gel and easily absorbable texture. The cream can be used as a part of professional protocol as well as in everyday home care.

USAGE

Apply as a finishing touch to the face and neck area with light pompadour movements.

The cream can be used as a part of professional protocol as well as in everyday home care.

ACTIVE INGREDIENTS

- Palmitoyl tripeptide-8
- Ascophyllum extract (brown algae)
- Asparagopsis Armata extract (red algae)
- White wild willow bark extract
- Scvalan
- Vitamin E (Tocopherol)

INDICATIONS

- For sensitive skin prone to allergies
- For skin with high blood vessels penetration
- For problem skin with inflammations
- For dry and fragile skin under influence of irritants

LIPID BALANCING LIGHT CREAM

P221
100 ml *light fluid texture*

- Restoration of the skin lipid barrier
- Synthesis of endogenous ceramides
- Normalization of sebum fatty acids balance
- Calming anti-inflammatory effect
- Produced in Switzerland



LIPID BALANCING LIGHT CREAM perfectly restores the skin's lipid layer and normalizes the qualitative and quantitative composition of fatty acids on the surface of the epidermis. The cream has a soothing effect on the skin and reduces the appearance of inflammatory reactions.

The balanced composition of meadowfoam, jojoba oils and glycosphingolipids make up for the lack of fatty acids and form hydrophilic channels, helping to deliver the active ingredients to the deeper layers of the skin. Glycosphingolipids enhance the synthesis of ceramides while being a substrate for the restoration of cell membranes, which increases the protective properties of the skin and prevents moisture loss. Due to the active concentration of niacinamide, the synthesis of triglycerides in sebocytes is reduced, which helps to reduce inflammatory reactions. Zinc gluconate has a powerful anti-inflammatory effect, helps to reduce the synthesis of dihydrotestosterone, and also modulates the local immune response.

High-quality restoration of lipid balance, as well as an additional complex effect, makes this cream an ideal healing cream for oily skin!

The cream has the lightest fluid texture and is completely non-comedogenic! Despite its oil-rich composition, the cream absorbs quickly and leaves no film or greasy feeling on the face.

USAGE

Apply to the face and neck area with light movements. The cream can be used as a part of professional protocol as well as in everyday home care.

ACTIVE INGREDIENTS

- Glycosphingolipids
- Meadowfoam oil
- Zinc gluconate
- Vitamin B3 (Niacinamide)
- Jojoba oil
- Allantoin

INDICATIONS

- To restore the skin's protective properties
- For chronic dermatoses
- For oily skin
- For skin barrier restoration
- In the complex care of seborrhea and acne

RENEW LIFTING CREAM

P194
100 ml *rich texture*

- Restructuring of extracellular matrix with targeted peptides
- Record 15% raise in elastin synthesis
- Influence on skin chromophores, evens skin tone
- Produced in Germany



Peptide cream provides an intensive anti-age effect and magnificent results: guarantees skin tightening and skin lifting; improves skin turgor and elasticity, remodels a face contour and evens skin tone. The product is best suitable on mature skin since it acquires such deep reconstruction!

Elastin-stimulating peptide with high bioavailability activates fibroblasts and makes dermis tighter. Skin becomes more resistant to sagging with the help of this peptide. Natural ingredients and biotech complex CHROMOCARE balance melanocytes functions, strengthen vascular wall, improve skin tone and complexion. Macadamia oil provides nourishing care for mature skin.

This cream with velvet and rich texture leaves a feeling of fullness on skin immediately after application.


 USAGE

Apply as a finishing touch to the face and neck area with light pompadour movements.

The cream is used in professional care and in everyday home care.

 ACTIVE INGREDIENTS

- Idealift®
- Chromocare
- Hyaluronic acid (high molecular & low molecular)
- Vitamin E (Tocopherol)
- Vitamin A (Retinyl palmitate)
- Natural silk powder

 INDICATIONS

- In case of gravitational ptosis
- To improve face contour
- In case of turgor loss
- In case of signs of chrono-ageing
- In case of dehydrated and fragile skin

BB-CREAM EXTRA LIGHT

H217
30 ml

- “Smart” pigment adapting to every skin tone
- Ultralight texture
- Natural UV-filters
- All-in-one: care, camouflage, protection, makeup base
- Produced in Germany



Camouflage and care in one bottle! BB-cream with a light texture adapts to every skin tone. It spreads ideally and covers all skin imperfections. It also hydrates and nourishes skin, protects it from UV-rays, performs antioxidant and anti-inflammatory actions. The product isn't runny and may be used as a light foundation.

Titanium dioxide performs physical UV protection in urban environments. Tocopherol blocks free radicals. Vitamin B5 soothes and stimulates skin tissue restoration. Sweet almond and grape seeds oils provide nutrition and hydration of skin. This product is ideal for everyday makeup. It is not comedogenic.

 USAGE

The cream is recommended for daily morning use for all skin types. It can be used as a base for make-up.

 ACTIVE INGREDIENTS

- Sweet almond oil
- Grape seed oil
- Vitamin B5 (Panthenol)
- Vitamin E (Tocopherol)
- Titanium dioxide

 INDICATIONS

- As skin imperfections camouflage
- For skin tone smoothing
- As everyday UV-protection
- As a foundation for makeup

SUN-BLOCK EMULSION

H218
50 ml *light fluid texture*

- Broad spectrum UV protection
- Matting effect
- Moisture-retaining properties
- Ultra light fluid texture
- Made in France



This sunscreen is a reliable protector of your skin from the aggressive effects of ultraviolet radiation, thanks to an innovative combination of UVA and UVB broad-spectrum filters.

A high concentration of the biotechnological active ingredient – Matmarine (3%), reduces the functioning of the sebaceous glands, and makes the skin matte. The cream at the same time maintains the hydrobalance in the tissues, prevents transepidermal moisture loss. Glycerin (1%) restores the overall moisture level of the epidermis.

It has a light fluid texture, the cream is instantly absorbed, leaving no feeling of greasy on the skin and shine, creates a matting effect.

USAGE

Recommended for use after aggressive techniques in the salon at the end of procedures, as well as in home care during periods of increased sun exposure.



ACTIVE INGREDIENTS

- Matmarin
- Glycerin
- Bis-ethylhexyloxyphenol methoxyphenyl triazine
- Ethylhexyl methoxycinnamate



INDICATIONS

- For normal, combination, oily skin
- For daily care in situations with increased solar activity
- During a course of aggressive procedures
- After injection procedures and acid peels
- While staying on the seashore or in the mountains

CREAM-PROTECTOR SPF30

H210
50 ml *rich texture*

- Triple protection
- Latest generation photostable UVB and UVA filters
- Can be used even after the most aggressive treatments
- Suitable for sensitive skin
- Produced in Germany



Powerful protection of skin cells during periods of increased sun activity. The triple protection system provides physical, chemical, and biological effects: UV rays are reflected or blocked and transformed into energy, while protective, regenerative, and immune processes are stimulated in the skin. The perfectly selected photostable composition of filters protects against the entire spectrum of UVB and UVA rays. The cream is recommended even after the most aggressive aesthetic treatments: its action is purely protective and its formula contains no active ingredients, making it absolutely safe and essential for daily use. Easily spreadable texture ensures even application of the cream. Now the skin of the face is protected, moisturized, and feels comfortable on the hottest day!

Recommended to be used for all skin types during the sunny season and in places of high sun aggression!

USAGE

Apply to the face and neck area, décolletage with light movements. Use for all skin types during the sunny season and in places of high sun aggression.



ACTIVE INGREDIENTS

- Ronacare Ectoin
- Ethylhexyl methoxycinnamate
- Diethylamino hydroxybenzoyl hexyl benzoate
- Bis-ethylhexyloxyphenol methoxyphenyl triazine
- Titanium dioxide



INDICATIONS

- For normal skin, dry skin
- For daily care in situations with increased solar activity
- During a course of aggressive procedures
- After injection procedures and acid peels
- While staying on the seashore or in the mountains

SILVERY MASSAGE GEL



P102
50 ml

- Restoring the skin's lipid barrier
- Maintaining the skin's natural moisturizing factor
- Long glide for any massage technique
- Produced in France

Silvery massage gel with a light floral aroma provides long-lasting glide up to 40 minutes for any massage technique. The gel helps to restore lipid mantle, saturates the skin with antioxidants, has a stimulating and toning effect on the skin. Provides long-lasting hydration and supports the skin's local protective reaction.


The gel is absolutely non-comedogenic, very comfortable for the client and economical in use.

 USAGE

Massage the face, neck and décolleté zone. After application, rinse off with warm water and tone the skin.

 ACTIVE INGREDIENTS

- Coconut oil (capril triglyceride)
- Natural glicerol
- Cumarine
- Sucrose

 INDICATIONS

- For any massage technique
- In procedure protocols
- In home care (using rollers and gouache)



MATRIX EYE CREAM

P204
50 ml


- Complex action on the eye area
- Droopy upper eyelid lift
- Smoothing fine lines
- Tightening thin skin around the eyes
- Making dark circles around the eyes less vivid
- Produced in France

Absolute best-seller in care for the eye area!

Universal complex eye care cream protects delicate skin around the eyes and effectively eliminates signs of ageing: puffiness, wrinkles, droopy upper eyelids. This peptide cream provides a remodeling result by lifting, filling, strengthening the blood vessels walls, improving the dermis, strengthening the lipid barrier.

Biomimetic peptide stimulates structural dermis components. Biotechnological complex BEAUTIFEYE visually lifts droopy upper eyelids. Hyaluronic acid performs strong hydration and reduces fine lines. Plant oils with polyunsaturated oily acids have nutritive qualities, promote restoration and strengthen lipidic skin barrier.

This cream with melting texture is quickly absorbed leaving no oily film on skin.


 USAGE

Apply to the orbital area daily morning/evening.

It is recommended to be used at a final stage of professional care and in the course of home care twice a day.

 ACTIVE INGREDIENTS

- Beautifeye™
- Matrixyl®Synthe'6®
- Asai oil
- Shi wood oil
- Hyaluronic acid (low molecular)

 INDICATIONS

- To care for skin with first signs of aging
- To care for droopy upper eyelid
- To care for sagging thin skin
- In anti-age procedures



SOFT-PEELING ENZYME MASK

P200
200 ml

- Enzyme peeling
- Soft exfoliant for sensitive skin
- Refines skin microrelief, instant whitening effect
- 3 ways of use: as a mask, exfoliant or gommage
- Produced in Switzerland

Enzyme cream-mask with double action: enzymatic and mechanical. This peeling with a soft creamy texture is suitable for sensitive skin. It gently disconnects horny scales and promotes mild exfoliation of dead skin cells. It smoothes microrelief and gives an instant brightening effect.

Papaya extract and corn starch guarantee deep purification and increase effectiveness of all products applied afterwards. Small abrasive is presented by ideally rounded polymethylene microspheres.

USAGE

There are 3 ways to use this product: as a mask, exfoliant or gommage. Use as a mask for sensitive skin: apply for 10 minutes and rinse with warm water. To intensify its action it is recommended to use as an exfoliant or gommage: apply a thin layer on face, let it dry and peel off following massage lines.

ACTIVE INGREDIENTS

- Papaya extract
- Hydrolyzed corn starch
- Exfoliating granules

INDICATIONS

- In all protocols to intensify action of products applied afterwards (as the second step)
- For leveling skin texture and complexion
- As elimination of keratosis manifestations
- Before injections of any types



DEEP CLEANSING JELLY-MASK

P100
200 ml

- Unclogs pores quickly
- Exposure time is only 10 minutes
- Suitable for sensitive skin with couperose
- Produced in Israel

Cold hydrogenation gel opens pores and softens comedones. It is suitable for sensitive skin and skin with rosacea, Produces no heat effect. This product efficiently prepares skin for mechanical atraumatic face cleaning. Comedone extraction is performed with maximum comfort, speed, and no pain.

Aloe Vera and ureas perfectly soften and hydrate skin. Bisabolol together with green tea and calendula extracts perform antiseptic and anti-inflammatory action and stimulate tissue regeneration.

This loosening mask with a jelly texture is easily spread on the skin. You spend a minimum amount of time and product!

USAGE

Spread the mask evenly over the face. Apply the mask for 10 minutes under a film. Afterwards remove the film in segments and the rest of the mask with a dry sponge. In the open area you can perform mechanical or machine cleaning.

ACTIVE INGREDIENTS

- Urea
- Aloe vera
- Alpha bisabolol
- Calendula extract
- Green tea extract

INDICATIONS

- In deep skin cleansing protocols
- As a preparation for any combination skin course
- In case of comedones



ULTRA-NORM CLEANSING GEL

P171
200 ml

- Deep skin cleansing without over drying effect
- Anti-inflammatory and binding effect
- Skin hydration and softening
- Produced in Germany

Face washing gel easily removes excessive skin sebum and impurities and does not dry out the skin. This gel for combination and oily skin perfectly unclogs pores, soothes and softens the skin, and performs anti-oxidant action.

Cleansing gel contains the following natural components: Aloe Vera and linden flowers extract that have antiseptic, moisturising and anti-oxidant qualities. This product is suitable for every skin type due to its ingredients and as it has no acids in it.

The gel has a light texture and is perfect for applying on skin and for rinsing with water.

USAGE

Apply to the face and neck area with light massaging movements. Rinse thoroughly with water.

ACTIVE INGREDIENTS

- Aloe vera
- Linden flower extract

INDICATIONS

- For everyday care of skin prone to oiliness
- For problem skin with signs of acne
- For normal and combination skin during spring-summer period



COMFORT CLEANSING MOUSSE

P172
150 ml

- Hydrates and prevents loss of moisture
- Removes makeup perfectly
- Does not overdry skin
- Produced in Germany

This gentle and airy mousse excellently purifies the skin. It leaves no sensation of dryness or tightness. It is easy to rinse off.

This is a perfect cleanser for all skin types, including sensitive skin. Already at the stage of cleansing, mousse actively cares for skin, providing hydration, soothing and restoring its freshness.

Cleansing foam contains hyaluronic acid for support of a natural skin moisturising factor and hydration. Betaine promotes moisture retention in skin cells, softens and soothes the skin.

USAGE

Apply the mousse on wet skin with light massage movements. Rinse with water. Use it twice a day in home care to clean face and neck skin. Finish the purification procedure with a toner.

ACTIVE INGREDIENTS

- Hyaluronic acid
- Betaine

INDICATIONS

- For daily cleansing of all skin types
- For makeup removal
- To care for dry, dehydrated skin



CALMING MILK

P173
200 ml

- Delicate cleansing of the most sensitive skin
- High-quality makeup removal
- Soothing, anti-inflammatory action
- Made in France

A light emulsion for soft, gentle cleansing of the skin from impurities, and for makeup removal. Supports the natural balance of the skin, maintaining its moisture and the integrity of the lipid layer. Contains white lily bulb extract, which provides an antiseptic effect, soothes reactive skin, moisturizes and softens it. Glycerin restores the overall moisture level of the epidermis. Osmoprotector – betaine regulates the concentration and balance of salts in skin cells, retains water molecules in them and strengthens cell walls, keeping moisture inside the cell.

USAGE

Apply to the face and neck area with a cotton pad to cleanse the skin and remove make-up.

ACTIVE INGREDIENTS

- White lily bulb extract
- Glycerin
- Betaine

INDICATIONS

- For thin and dry skin care
- In therapeutic anti-aging procedures
- For prone to irritation skin care
- In the presence of couperosis



CALMING TONIC

P174
200 ml

- Sensitive skin lotion for skin prone to irritations
- Moisturizing and softening
- pH level restoration

Toner for sensitive skin moisturizes and soothes the skin. Eases skin tightness and softens epidermis. The product perfectly tonifies the skin, restoring its pH level. It has antioxidant and anti-inflammatory properties. This toner with a light aroma and texture leaves no sticky film on skin.

Everyday use of calming toner significantly decreases skin sensitivity due to activity of phyto components. Laminaria, ginseng, calendula extracts and allantoin perform a long-lasting hydration, anti-inflammatory action and tissue restoration.

USAGE

Apply to the face and neck area with a cotton pad after washing and removing makeup.

ACTIVE INGREDIENTS

- Laminaria extract
- Extract of ginseng
- Calendula extract
- Allantoin

INDICATIONS

- For fragile, dry and dehydrated skin
- As a part of anti-age procedures
- For atopic skin prone to irritations
- For skin with rosacea
- For face cleansing during the day



ULTRA-NORM REFRESHING TONIC

P175
200 ml

- Seboregulation
- Pores contraction
- Anti-inflammatory and calming action
- Produced in France

Refreshing toner for oily skin is rich in active ingredients and has a sebum regulating action. The product perfectly tightens pores and normalizes skin sebum production. It produces a light exfoliating effect and smoothes skin relief. The toner stimulates skin natural bactericidal protection mechanisms and decreases inflammation, keeping the skin well hydrated. The toner's light aroma leaves a fresh sensation on skin.

Zinc PCA and salicylic acid regulate sebaceous glands activity and perform light keratolytic action. Lime extract with its antibacterial and anti-inflammatory properties performs antioxidant skin protection. Aloe Vera perfectly hydrates and soothes skin.

USAGE

Apply to the face and neck area with a cotton pad after washing and removing make-up.

ACTIVE INGREDIENTS

- Zinc PCA
- Salicylic acid
- Key lime extract
- Aloe vera

INDICATIONS

- For everyday care for skin prone to oiliness
- For a problem skin care, for acne prevention
- For a combination skin care during spring-summer period



PRE-PEEL LOTION

M303
200 ml pH 4.0

- Decreases skin acidity level efficiently
- Degreases skin before a peel procedure
- Prepares skin for a course of peelings
- Prevents skin from developing inflammations
- Produced in Israel

Pre-peeling degreasing lotion is a must-have product in every chemical peel procedure for all skin types including sensitive skin. It works as a degreaser dissolving lipids on skin surface before an application of a chemical solution that potentiates deep penetration of acids. It perfectly prepares skin for following active influence: degreasing skin, acidifying the pH environment of skin, preventing inflammatory reaction from progressing, performing keratolytic action to smoothen skin.

Thanks to AHA and BHA acids – glycolic (5%), lactic (2%), salicylic (1%), phytic (1%), citric; and due to plant and fruit extracts it decreases inflammation, provides antiseptic and bactericidal action, and performs as mild keratolytic.

USAGE

In the peel procedure: After cleansing the skin, degrease the skin and lower the pH for deeper and more even acid penetration with Pre-peel Lotion.

In home care: As a pre-peeling preparation for 14 days prior to the procedure, use the lotion in the evening. In the complex care for problem skin, apply a course of up to 1 month daily in the evening.

ACTIVE INGREDIENTS

- Glycolic acid (5%)
- Lactic acid (2%)
- Salicylic acid (1%)
- Phytinic acid (1%)
- Licoric extract
- Bearberry extract
- Lemon extract

INDICATIONS

- In every peel procedure
- To dry up oily skin with acne
- As a complex supporting course in a home care between peel procedures



NEOTHRIX

PROFESSIONAL TRICHOLOGICAL LINE

SCALP & HAIR CARE



The line was developed by leading European trichologists and dermatologists



The optimal set of products for treatment and care effects



Clear and detailed schemes how to use the products



The most effective ingredients in a unique form of delivery - the technology of long-term release

GENERAL SCHEME OF USING NEOTHRIX PRODUCTS

	HAIR LOSS	OILY SCALP	DANDRUFF	PREVENTIVE HOME CARE
ANTI-DANDRUFF INTENSE SHAMPOO		1-2 times a week, alternate with ↓	Intensive course for 10-14 days daily, Supporting course: 1-2 times a week, alternate with ↓	
RICH REPAIRING SHAMPOO	acceptable daily	acceptable daily	acceptable daily	acceptable daily
RICH REVITALIZING CONDITIONER	necessary after shampoo	necessary after shampoo	necessary after shampoo	necessary after shampoo
ANTI HAIR LOSS CONCENTRATE	nightly	1-2 times a week	1-2 times a week	once a week
SCALP PEELING	1-2 times a week	2-3 times a week	2-3 times a week	once a week



ANTI HAIR LOSS CONCENTRATE

H330
100 ml

- Prevents hair loss and stimulates hair growth
- Blocks receptors from dihydrotestosterone
- Enhances microcirculation
- Strengthens the hair structure

The concentrate enhances the metabolism and trophism of hair follicles. It has a powerful antioxidant effect, prevents the preterm transition of hair into the telogen stage. Does NOT cause withdrawal syndrome!

Due to the unique complexes Procapil, Nucleo Tricho-hyal and slow-release technology the concentrate stimulates cell regeneration and promotes new hair growth. Increases the amount of hair in anagen by 21%. Reduces the greasiness of the scalp and blocks the oxidative stress in the tissues.

The concentrate has a liquid texture, is easily absorbed, gives a feeling of freshness and cooling. Does not greasy the hair roots. In a very convenient spray bottle!!!

👉 USAGE

Apply to dry scalp, along the partings. Do not rinse. To prevent hair loss, use 2 times a week. In the course of treatment of alopecia, use daily at night.

🧪 ACTIVE INGREDIENTS

- Procapil
- Nucleo tricho-hyal
- Polyquaternities
- Rosemary and olive oil

✅ INDICATIONS

- In treatment of alopecia of any etiology
- As a prevention of hair loss
- For oily scalp control
- To improve hair quality



SCALP PEELING

H331
100 ml

- Powerful acid-free keratolytic effect
- Sebo-regulating effect
- Does not dry out the hair
- Nourishes and softens the scalp

SCALP PEELING gel deeply exfoliates horny cells, normalizes the differentiation of keratinocytes and regulates sebum function. The product gently cleanses the scalp, has antiseptic and anti-inflammatory properties and is suitable for the most sensitive skin. The peeling effect is achieved by dissolving sebum fatty acids in peppermint and cinnamon oils. Additionally, oils enhance microcirculation of the scalp, dilate blood vessels, enhance the trophism of hair follicles, and prevent hair loss.

Urea works as a keratolytic, improves exfoliation processes and eliminates hyperkeratosis. The small molecular weight of urea helps to conduct other ingredients into the lower layers of the skin. This deep cleansing of the scalp does not cause drying and itching. Allantoin and panthenol additionally soften and moisturize the scalp, soothe and stimulate regenerative processes. The peeling is easy to apply, gel texture is easily distributed on the scalp. Does not cause a burning sensation, and has a slight cooling effect.

👉 USAGE

Apply to dry scalp, along the partings. Leave for 2-5 minutes, rinse and shampoo twice. For the prevention of hyperkeratosis, use 1 time per week. In the course of treatment of pathologies of the scalp and hair, can be used 2-3 times a week.

🧪 ACTIVE INGREDIENTS

- Peppermint oil
- Cinnamon oil
- Chamomile flower extract
- Urea
- Allantoin
- Vitamin B5 (Panthenol)

✅ INDICATIONS

- For elimination of hyperkeratosis
- For normalization of sebaceous glands
- In a complex treatment of alopecia in different genesis
- For prophylactic deep head skin cleansing



RICH REPAIRING SHAMPOO

H332
200 ml

- Careful removal of dirt
- Restoration of hair structure
- Scalp nourishment
- Suitable for frequent washing

RICH REPAIRING SHAMPOO provides external and deep cleansing of hair. In addition, the product helps to get rid of styling products and excessive sebum, keeping hair shiny, healthy, and strong.

Japanese camellia oil nourishes the skin and hair shaft, fatty acids (omega-6, omega-9) add shine to the hair and effectively retain moisture.

Pomegranate extract has an astringent, bactericidal, and anti-inflammatory effect. Prevents dandruff and relieves irritation of the scalp. Guar and polyquaterniums restore areas of damaged hair with their positive charges. Hair is not electrified, becomes smooth, does not get tangled, and brushes perfectly.

USAGE

Double wash: apply to the scalp, foam, hold for 3 minutes and rinse, then repeat the procedure. Can be used daily. After application, it is obligatory to use a conditioner.

ACTIVE INGREDIENTS

- Japanese camellia oil
- Pomegranate extract
- Guar silk
- Polyquaternities
- Cocamid

INDICATIONS

- As a daily care
- In alternation with ANTI-DANDRUFF INTENSE SHAMPOO (according to indications)



ANTI-DANDRUFF INTENSE SHAMPOO

H333
200 ml

- Intense antifungal effect
- Antiseptic and anti-inflammatory effect
- Oily scalp control

Anti-dandruff intense shampoo with antiseptic action directly blocks all the key links of the pathological process. The cause of dandruff is the growth of fungi due to excessive sebum secretion, which serves as an ideal breeding ground for microorganisms. Starts an inflammatory process, waste products cause skin irritation and itching.

Due to the highly effective fungicide Octopirox and antiseptic components, this shampoo blocks the growth of fungi, yeast, and other microorganisms. Sulfur reduces sebum activity and has a mild keratolytic effect. The unique

Tricho-hyal complex improves oxygenation and cell nutrition, increases metabolic activity, prolonging the life of the hair follicles. Menthol has a calming and cooling effect in the application of the product.

USAGE

Double wash: apply to the scalp, foam, hold for 3 minutes and rinse, then repeat the procedure. The course of treatment is prescribed by the doctor individually. In preventive care use no more than twice a week.

ACTIVE INGREDIENTS

- Octopirox
- Dehydroacetic acid
- Sulfur
- Tricho-hyal

INDICATIONS

- As a dandruff treatment
- In case of seborrheic dermatitis
- In case of excessive oiliness of the scalp



RICH REVITALIZING CONDITIONER

H334
200 ml

- Restoration of hair structure
- Antistatic effect
- Does not weigh hair down

RICH REVITALIZING CONDITIONER improves the quality of hair, gives it smoothness and healthy shine. It does not weigh hair down, does not make the scalp greasy, and is suitable for all hair types. Due to hydrolyzed keratin, it fills the voids in the damaged shaft, moisturizes, and gives elasticity.

The conditioner has an antistatic effect, restoring the negatively charged surface of damaged hair. Simplifies combing and prevents tangling.

The conditioner is an excellent antiseptic, as it contains dehydroacetic acid, which blocks the growth of fungi immediately after the first use. Tocopherol enhances regeneration, prevents hair breakage, and provides antioxidant protection.

USAGE

Apply to clean wet hair with massaging movements. Then rinse the hair well with water. Do not apply to the scalp. Suitable for daily use.



ACTIVE INGREDIENTS

- Hydrolyzed keratin
- Dehydroacetic acid
- Begentrimonium chloride
- Vitamin E (Tocopherol)



INDICATIONS

- In care for all hair types
- For antistatic effect
- For moisturizing and restoring hair
- As a mask in a spa treatment

PROTOCOL OF THE PROCEDURE IN THE TRICHOLOGIST'S ROOM

1	Trichoscopy
2	SCALP PEELING on dry scalp, along the partings, exposure time 2-5 minutes
3	RICH REPAIRING SHAMPOO - double hair wash
4	RICH REVITALISING CONDITIONER - on wet hair, exposure time 3-5 minutes
5	Hair drying
6	Trichoscopy (optionally) - to show the client the achieved result
7	Mesotherapy (vascular stage + cocktail with 5-alpha reductase blockers, vasodilators, vitamins, macro- and microelements) / PRP-therapy
8	Application of ANTI HAIR LOSS CONCENTRATE. Sale opportunity!

BODY CARE



THERMO-ACTIVE SLIM GEL

P319
300 ml

- Heating effect
- Very light texture
- Complex anti-oedematic, lipolytic and firming action
- Made in France



Thermoactive gel has a very light texture, reduces cellulite and is quickly absorbed without leaving stickiness. Highly active components: extracts of guarana and kelp and field horsetail guarantee this effect. This gel for figure correction provides a local increase of tissue temperature, which directly affects the metabolism of the cells. Also it stimulates the microcirculatory channel, providing a powerful lipolytic and lymphatic drainage effect on problem areas. It is an excellent product to lose weight, reduce the volume and get rid of the effect of "orange peel".

USAGE

In the procedure: Locally apply the gel under a film for 7-10 minutes until the skin is actively warmed up. Then you can massage using massage products or make the exposure of P321 SLIMMING ALGAE MASK.

To enhance the anti-cellulite effect, you can add 15 ml of gel to P321 SLIMMING ALGAE MASK while mixing.

In home care: Locally apply the gel under a film for 30-40 minutes. During the time of exposure it is recommended to be active, to move. Use 2-3 times a week.



ACTIVE INGREDIENTS

- Guarana
- Field horsetail extract
- Laminaria extract



INDICATIONS

- In case of any stage of cellulite
- In case of excessive fatty deposits
- In care for flabby skin
- In complex body correction programs

RELAXING BLUEBERRY MASSAGE GEL

- P152
300 ml
- A holistic approach to aesthetic problems of the body
 - Activation of the most important metabolic processes
 - Excellent gliding properties, suitable for all types of massage techniques
 - Made in France



The jelly massage gel with a delightful blueberry aroma turns into a delicate melting milk on the skin, providing a long-lasting slide, moisturizing, toning and anti-edema effect. The massage product has powerful antioxidant properties. The mechanical effect of the massage is complemented by a pleasant aroma. Relaxation is achieved by the impact on the senses through: tactile sensations, fragrance and color.

USAGE

Apply the gel to dry skin and massage. The duration of the massage depends on the chosen technique.

At the end of the procedure turn the gel into a milk using a water spray. Distribute the milk evenly with light movements until it is completely absorbed or remove the residue with a towel or napkin.

ACTIVE INGREDIENTS

- Glycerin
- Blueberry (flavoring)

INDICATIONS

- In case of flabby skin, loss of tone
- In case of excessive fatty deposits
- In case of psychosomatic imbalance

COOLING TONING GEL

P326
100 ml

- Vasodilating and anti-edematous
- Soothe and moisturize the skin
- Made in Italy



Cooling gel for feet quickly relieves fatigue, leaving a feeling of freshness and coolness. Due to vegetable oils it contains, it has a softening and nourishing effect and maintains the level of hydration in the skin. This anti-edematous, refreshing feet gel contains vascular strengthening components, improves the circulation of fluids and nutrients, thus reducing swelling and fatigue of tissues. A powerful synergy of antioxidants protects skin cells. The gel has a very light texture and is instantly absorbed.

USAGE

Apply the gel with gentle massage movements in a thin layer to the skin of legs and feet.

ACTIVE INGREDIENTS

- Centella asiatica
- Fir extract
- Spikenard extract
- Mentol

INDICATIONS

- In care for dry skin
- In care for swollen feet
- In case of feeling of fatigue



SLIMMING ALGAE MASK

P321
1000 g

- Dense alginate, easy to apply
- Mineralising, firming and moisturising action
- Reducing the volume of problem areas either alone or in complex care
- Made in France



The algae mask has a comfortable plasticizing time and is especially convenient for work with large skin areas. It has an absorbing, antioxidant and moisturizing action. Strengthens and revitalizes tissues, increasing metabolic processes in the dermis. Also increases skin elasticity and firmness, as well as improves microcirculation. The dense alginate creates perfect conditions for a deeper penetration of earlier applied products. The lipolysis process is activated multiple times in case of adding P319 THERMO-ACTIVE SLIM GEL to the mask!

USAGE

Mix for one minute 300 ml of hot water (60°C) and 150 g of powder to create a homogeneous mixture. Apply to the problem areas. After 20 minutes, remove it as one piece. To enhance the anti-cellulite effect, you can add 15 ml of P319 THERMO-ACTIVE SLIM GEL to the mask while mixing.

ACTIVE INGREDIENTS

- Lithothamnium
- Green tea leaf extract
- Field horsetail extract

INDICATIONS

- In anti-cellulite programs
- In complex slimming programs
- To improve firmness of flabby skin
- In care for dry and flaky skin



CHOCOLATE THERMO-COCOON

P322
1000 g

- SPA and slimming in one procedure
- Active action due to heating
- Aromatherapy
- Activation of lymphatic drainage and lipolytic activity
- Made in France



Fizzy wrap of 100% cocoa perfectly nourishes the skin. The subtle aroma of chocolate has relaxing properties and positive influence on the central nervous system. Micronized powder mixed with water promotes a warming effect. The mixture is applied to the well heated skin. The heating effect enhances cell metabolism, which allows to increase tissue nutrition and activate the processes of lipolysis.

USAGE

Mix 250g of powder and 250ml of water (20°C – maximum temperature) to create homogeneous mixture. Quickly apply it on chosen zones (do not apply on breast area). Cover with plastic foil to keep the heating effect. The exposure time is 15-30 minutes.

ACTIVE INGREDIENTS

- 100% cacao
- Lithothamnium

INDICATIONS

- In case of excess fatty deposits
- In case of cellulite
- When skin needs nourishment
- In relaxing and sweet SPA procedures



DETOXIFYING TRIPLE SALT TREATMENT

P316
300 ml

- Three kinds of salts (from Himalayas, Dead Sea, France)
- 6 aroma oils
- Detoxification and drainage of tissues
- Mineralization through the osmosis effect
- Cell metabolism stimulation
- Made in France



Three types of salts with a variable mineral composition provide an intensive detoxification effect to the skin. The salts draw out the toxins and due to the osmosis process supply the skin with beneficial components. The combination of 6 essential oils guarantee a pleasant aroma. This product is an excellent salt exfoliant! It has a complex action: it improves the metabolic activity of the cells, solves the problem of congestion, improves regeneration and microcirculation. The complex is recommended to use with a film and in combination with a thermal blanket to enhance the process of sweating.

USAGE

Gently apply the product on the skin and wrap in a film. Turn on a thermal blanket. The exposure time is 40 min. Then shower is required. In the end apply a finishing cream.

ACTIVE INGREDIENTS

- Salts: Himalayan, French celtic, Dead sea
- Essential oils: Lavender, Petitgrain, Cypress, Geranium, Roman chamomile, Rosemary

INDICATIONS

- In case of signs of tissue swelling
- In case of cellulite or swollen form
- In case of excessive fatty deposits
- In complex protocols of figure correction

HOME CARE PRODUCTS FOR YOUR CLIENTS

Derma
Series

reNeo
cosmetics



CLEANSING
based on preferences



MASKS
based on skin type



SERUMS
based on problem



CREAMS
based on texture



EYE CARE
must have



BODY CARE
based on needs

CHOOSE **SERUM** BASED ON PROBLEM

PRE-AND-POST PEELING

RENEWING ENZYME AHA SERUM



H108 | 30 ml
Dense gel texture

- Epidermis regeneration
- Gentle exfoliation
- Effective pre-and-post peeling care



REGENERATION

HPR SERUM with Granactive retinoid 2%



H224 | 15 ml
Light gel texture

- Powerful skin cell renewal
- Regulation of keratinization on all levels
- Correction of acne-like rashes



ANTI-PIGMENTATION

MELANO-BLOCK SERUM



H182 | 30 ml
Light gel texture

- 4 super-powerful brightening agents
- Interacts with the skin microbiome
- Perfectly even skin toning



LIFTING

3D-LIFT SERUM



H186 | 30 ml
Light gel texture

- Peptide complex for atonic skin
- Lifting and hydration
- Record 15% increase in elastin synthesis



NOURISHING

VITA-ACTIVE PEPTIDE SERUM



H220 | 30 ml
Fluid texture

- 11 active ingredients
- Restoration of a skin lipid barrier
- Complex anti-age effect



MOISTURISING

ANTI-WRINKLE SERUM



H170 | 30 ml
Ultra-light gel texture

- Deep moisturizing
- Smoothing fine lines and wrinkles
- Can be used on eye area



CHOOSE **SERUM** BASED ON PROBLEM

ANTI-ACNE

LOCAL SOS-SOLUTION



H214 | 15 ml

Suspension.

Needs to be well shaken before application!

- Intense drying and bactericidal action
- Resorption effect for infiltrates
- Tissue regeneration



OIL CONTROL

TOTAL OIL-CONTROL SERUM



H177 | 30 ml

Light gel texture

- Complex action on 4 main problems of sebo-regulation
- Restoration of natural bacterial flora balance
- Additional hydration for extra dry skin



ANTI-RED

ANTI-RED CALMING SERUM



H179 | 30 ml

Fluid texture

- SOS-serum for redness removal
- Instant calming effect
- Decreasing of skin sensitivity to environmental irritants



CHOOSE **MASK** BASED ON SKIN TYPE

DEHYDRATED SKIN

HYDRA-HELP MASK



H136 | 100 ml

Use 1-2 times a week. Apply the mask in a dense layer on the face and neck area, leave it for 15-20 minutes, then soak the remains with a dry napkin.

- Skin hydrobalance restoration
- Stimulation of natural moisture retention processes
- Long-lasting effect of deep skin hydration



COMBINATION AND OILY SKIN

SEBO-NORM MASK



H146 | 100 ml

Use once a week. Apply the mask and leave it for 10-15 minutes, then remove the remains with warm water. Finish care with a cream.

- Normalizing action on problem skin
- Complex sebo-regulation
- Anti-inflammatory and antibacterial effect



DRY AND AGE SKIN

SOFT BALANCE MASK



H119 | 100 ml

Use 1-2 times a week. Apply the mask and leave it for 10-15 minutes, then remove the remains with warm water. Finish care with a cream.

- Restoration of epidermis lipids
- Nutrition for ALL skin types including sensitive and oily skin
- Powerful detox action with a lightening effect



CHOOSE CREAM BASED ON TEXTURE

ULTRA-LIGHT

CALMING LIGHT CREAM



H191 | 50 ml
Light gel texture

- Quickly soothes skin irritation of any type
- Invigorates blood vessels net
- Ultra light gel texture
- Teen skin care



ULTRA-LIGHT

LIPID BALANCING LIGHT CREAM



H222 | 50 ml
Ultra-light fluid texture

- Restoration of the skin lipid barrier
- Synthesis of endogenous ceramides
- Normalization of sebum fatty acids balance



DENSE

RENEW LIFTING CREAM



H195 | 50 ml
Dense creamy texture
(rich texture)

- Restructuring of extracellular matrix with targeted peptides
- Record 15% raise in elastin synthesis
- Evens skin tone



LIGHT SPF

SUN-BLOCK EMULSION SPF 50



H218 | 50 ml
Ultra light fluid texture

- Broad spectrum UV protection
- Matting effect
- Moisture-retaining properties



DENSE SPF

CREAM-PROTECTOR SPF30



H210 | 50 ml
Dense texture

- Triple protection
- Latest generation photostable UVB and UVA filters
- Suitable for sensitive skin



LIGHT CAMOUFLAGE

BB-CREAM EXTRA LIGHT



H217 | 30 ml
Fluid texture

- "Smart" pigment adapting to every skin tone
- Natural UV-filters
- All-in-one: care, camouflage, protection, makeup base



CHOOSE **CLEANSING** BASED ON PREFERENCES

LIGHT GEL

ULTRA-NORM CLEANSING GEL



P171 | 200 ml

- Deep skin cleansing without over drying effect
- Anti-Inflammatory and binding effect
- Skin hydration and softening



AIR MOUSSE

COMFORT CLEANSING MOUSSE



P172 | 150 ml

- Hydrates and prevents loss of moisture
- Removes makeup perfectly
- Universal cleansing for all skin types



DELICATE MILK

CALMING MILK



P173 | 200 ml

- Delicate cleansing of the most sensitive skin
- High-quality makeup removal
- Soothing, anti-inflammatory action



UNIVERSAL TONIC

CALMING TONIC



P174 | 200 ml

- Caring for sensitive skin prone to irritations
- Moisturizing and softening
- pH level restoration



NORMALIZING TONIC

ULTRA-NORM REFRESHING TONIC



P175 | 200 ml

- Seboregulation
- Pores contraction
- Anti-inflammatory and calming action



WHEN PRESCRIBED BY A COSMETOLOGIST

PRE-PEEL LOTION AHA&BHA



M303 | 200 ml

- Decreases skin acidity level efficiently
- Prepares skin for a course of peels
- Prevents skin from developing inflammations



MUST-HAVE

EYE CARE

MATRIX EYE CREAM



H143 | 15 ml

Creamy texture

- Complex action on the eye area
- Droopy upper eyelid lift
- Smoothing fine lines



DELICATE PEELING

SOFT-PEELING ENZYME MASK



H104 | 100 ml

Use 1-2 times a week. Apply for 10 minutes and rinse with warm water.

- Soft exfoliant for sensitive skin
- Refines skin microrelief, instant whitening effect
- 3 ways of use: as a mask, exfoliant or gommage. Use twice a week



CHOOSE **BODY CARE** BASED ON NEEDS

ANTI-CELLULITE

THERMO-ACTIVE SLIM GEL



H320 | 100 ml

- Heating effect
- Light fast-absorbing texture
- Complex lipolytic and anti-cellulite effect



LIGHT LEGS

COOLING TONING GEL



P326 | 100 ml

- Strengthen the vessels
- Soothes and moisturizes the skin
- Swelling decrease



MAKE UP



D03 Siena



D02 Light coral



D05 Alizarin



D04 Mars brown



D01 Carmine



RENEO LIPS

7 ml

- 5 top watercolor shades
- Wet-look effect
- Permanent gloss
- Protection and moisturizing
- Made in Italy



Luxurious delicate shades are always in demand. Light, translucent gloss combined with a wet-look effect guarantee stunning results!

The formula with a perfectly balanced combination of decoration and care. Light ethers provide a thin comfortable layer of application. Innovative glossy polymers ensure long-lasting natural shine. High viscosity oils provide softening, moisturizing and protection. Formula contains no parabens, preservatives or paraffin.



ACTIVE INGREDIENTS

- Mica
- Ricinus communis seed oil



info@reneo-cosmetics.com



@reneo_cosmetics



@reNeo.cosmetics

reneo-cosmetics.com